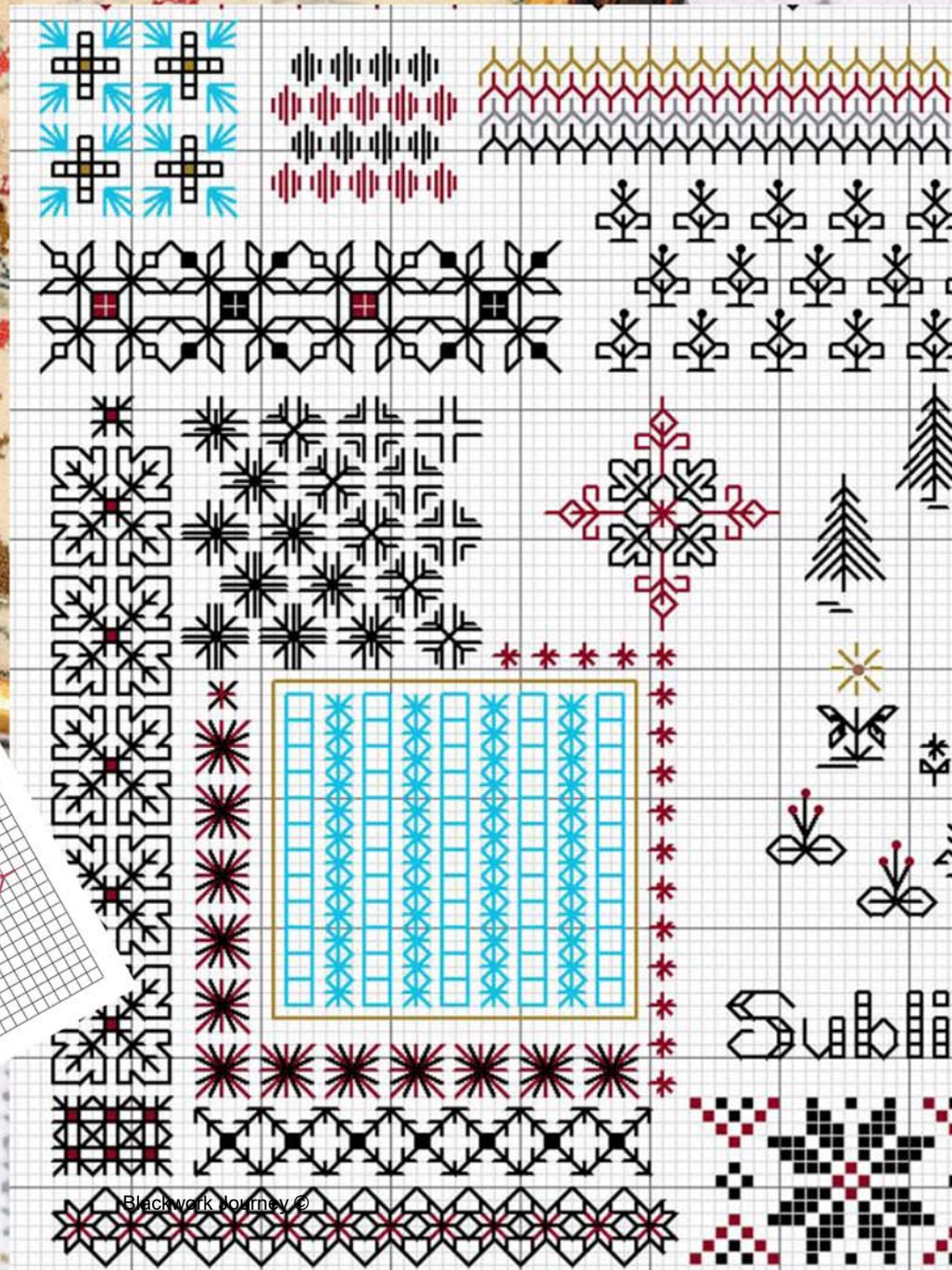
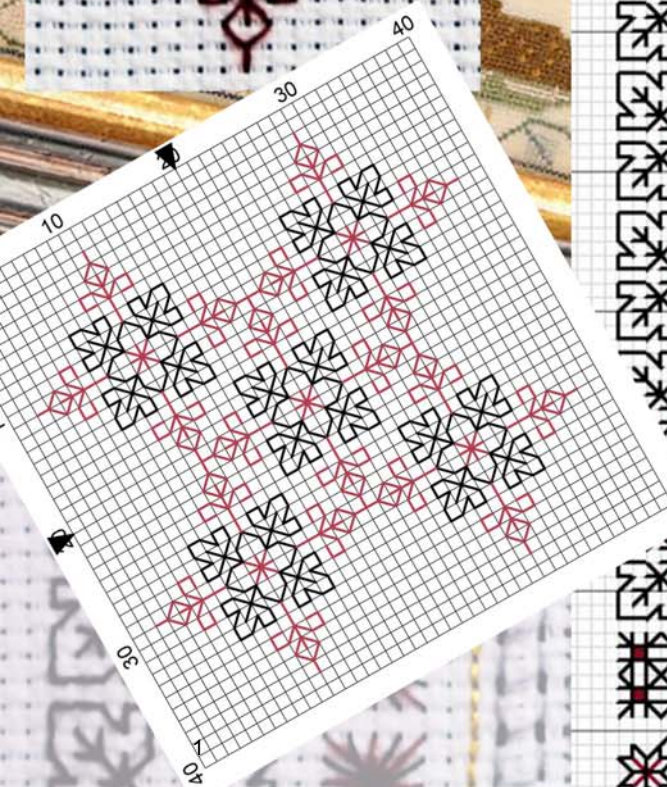


'Sublime Stitches' Part 10 - Aida

Happy the Man, whose tender care
relieves the poor Distress'd;
when Troubles compass him around
the Lord shall give him Rest.



'Sublime Stitches' Aida Part 10, Patterns 127 -

Full Design Area: 16.07 x 29.57 inches worked on 14 count AIDA
225 x 414 stitches

Material: Minimum size - 26 x 40 inches to allow for embroidery frame and mounting

Suggested fabric: Zweigart 14 count Aida, white, antique white or cream

The sample was worked on Zweigart 14 count Aida, white

Over dyed or space dyed fabrics may detract from the design
- select carefully!

There are 12 pages of patterns. One page will be placed in 'Freebies' in Blackwork Journey every month. Each pattern or group of patterns have their: **Individual numbers, Technique, Threads and beads used, Chart, Picture and Method.**

Each month join a printout of the chart to the one before. The final chart will consist of 12 pages arranged in the order as shown above.

Please follow the main chart carefully to place and work the different patterns. The embroidery may differ slightly. Where patterns overlap between the pages do not start the pattern. The part patterns are there to help in the placing of the design. As additional pages are added the part patterns will be completed.

Do not add beads to the design until all 12 pages have been worked.

The sample was worked in DMC and Anchor floss in four shades including DMC 310 as the base colour.

Cross stitch is worked in TWO strands over two threads,

back stitch is worked in ONE strand over two threads.

Threads used:

DMC 310 Black, three skeins

Anchor 1206 variegated, or DMC 815 Garnet, three skeins

DMC 415 Pearl grey, one skein

DMC 414 Steel grey, one skein

Metallic threads used:



Rainbow Gallery Petite Treasure Braid PB01, one card or DMC

Lights Effects E3852 Dark Gold, one skein

DMC Lights Effects E317

DMC 996 electric blue is used on the chart to show ONE strand of 415 and ONE strand 414 together to make two strands for pulled thread work stitches.

DMC Precious metal threads and Rainbow Gallery Petite Treasure Braid PB01

Beads used:

Mill Hill Glass Beads 557 Gold or 2011 Victorian Gold, one packet Size 11 (2.5mm) Mill Hill Glass Beads 2022 Black /Grey/ Silver, one packet Size: 11/0 (2.5 mm)

Beads are optional. Use them as and where you feel is appropriate. I have indicated on the chart where I have added them. Do not attach the beads until the embroidery is complete.

Legend:

- [2] DMC-310 ANC-403 DML- black
- [2] DMC-815 ANC-44 DML- garnet - md
- [2] DMC-996 ANC-433 DML- electric blue - md

Call Outs:

- [2] DLE-E3852 Dark Gold DMC Light Effects

Backstitch Lines:

- DMC-310 black
- DMC-815 garnet - md
- DMC-996 electric blue - md
- DLE-E3852 Dark Gold

French Knots:

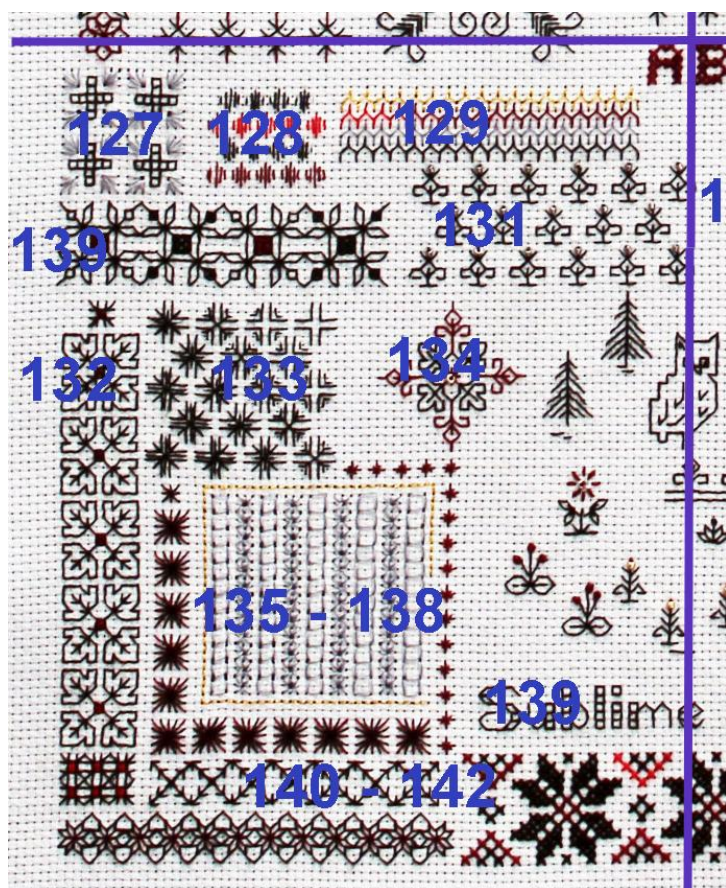
- DMC-310 black
- DMC-815 garnet - md

Beads:

- MHG-557 Mill Hill Glass Beads-Gold

Part 10 Patterns 127 - 142

Sublime Stitches' consist of 12 numbered pages which joined together complete the Master Chart. Complete the patterns from previous pages before starting the new patterns.

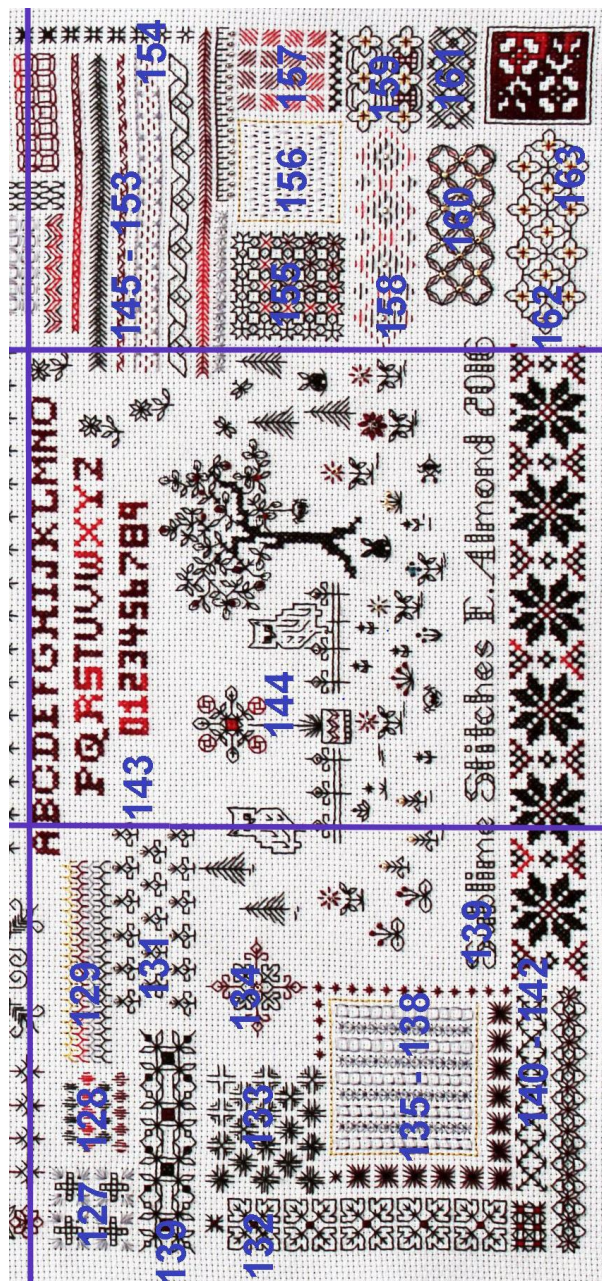


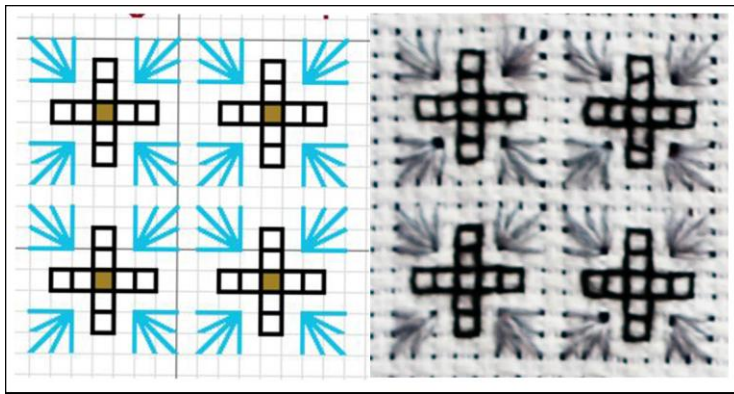
'Sublime Stitches' Aida

Pages 10 - 12 Patterns 127 - 163

To help position the patterns correctly on the fabric and to see how they relate to each other look carefully at the embroidery. If only a small part of a pattern is shown on one page leave it until the following month and work the pattern as a whole.

Complete the patterns from Page 7. There are 16 new patterns to add.



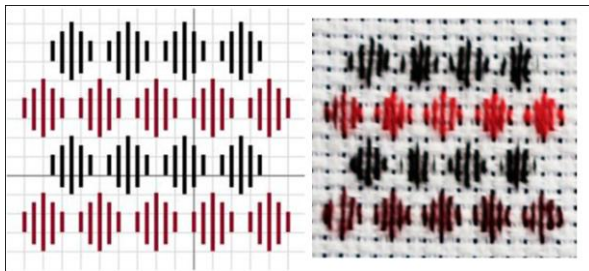


Pattern 127 Pulled thread and Blackwork combined

Stitches used: Back stitch DMC 310
Leaf stitch, DMC 415

Leaf stitch has been used frequently in this sampler. Combined with blackwork it is simple, pretty and effective.

Pattern 128 Pattern darning



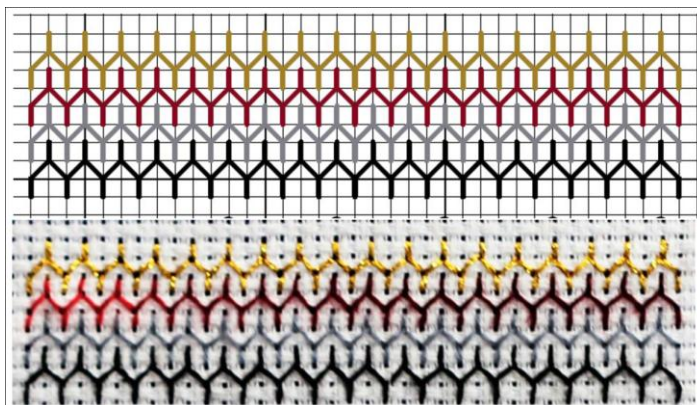
Thread: DMC 310, Anchor 1206, E317 Stitches: straight stitches of varying length.

Pattern darning is a type of embroidery that uses parallel rows of straight stitches of different lengths to create a geometric design. The pattern is built up using one strand of thread with one thread left between each stitch.

Again it is a simple technique found in Africa, Japan, Northern and Eastern Europe, the Middle East, Mexico and Peru.

Pattern darning is also used as a filling stitch in blackwork embroidery

Pattern 129 Interlocking geometric shapes



This blackwork stitch can be used to cover large areas easily and quickly. Check that all the 'points' have been added.

Threads: DMC 310, 415
Anchor 1206
E3852

Trees and flowers in traditional samplers

Trees, leaves and plants appear in many traditional samplers and a number of different patterns have been used within this sampler. Sarah Aldwin's Sampler is typical of samplers of the period but samplers from other countries display the same characteristics.

'Sublime Stitches' has its own floral bands and trees in keeping with past tradition. Patterns 130, 131 and 132 show how floral motifs can be used as bands or as filler patterns.



Sarah Aldwin Mid 18th Century.

Brightly coloured sampler featuring a chained stag sitting within a floral arch with customary alphabets, potted plants and a four line verse. The whole surrounded by a geometric leafy border

Original ebonised frame
Framed Size: 16 x 12 ins.

Whitney Antiques



Janet Smibers Her Work 1822. Aged 13

A number of samplers from this very distinctive Edinburgh School have been well documented and date from 1819 to 1837. All are of a very similar complex design and feature a large five bay house with blue slate roof and fenced garden, a moralistic verse, floral swags and parrot like birds

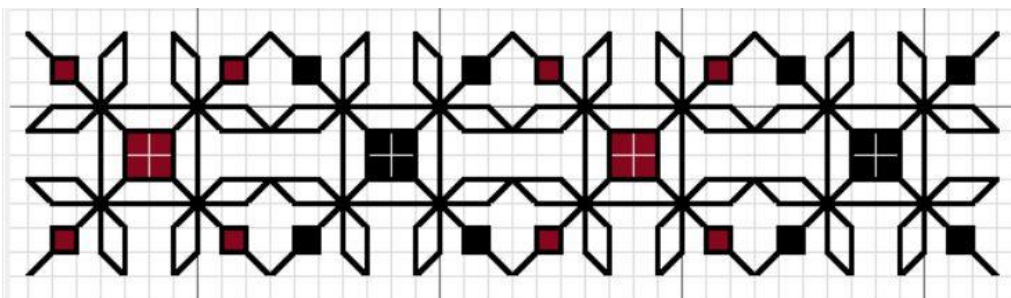
Whitney Antiques

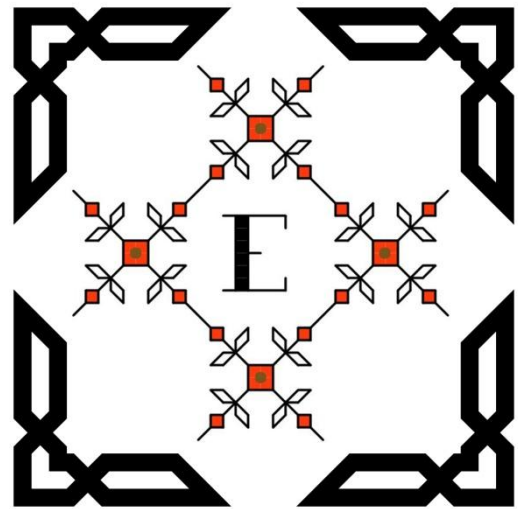
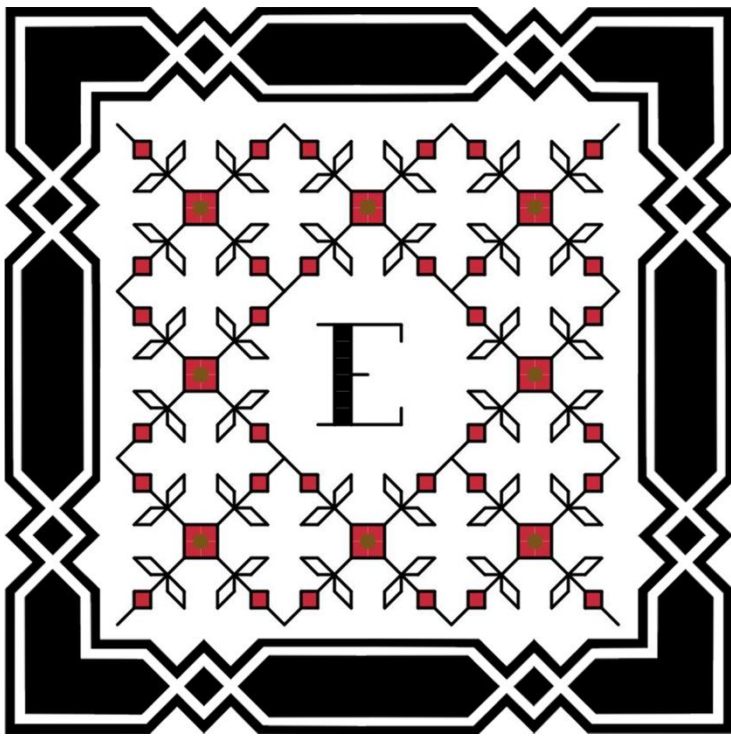
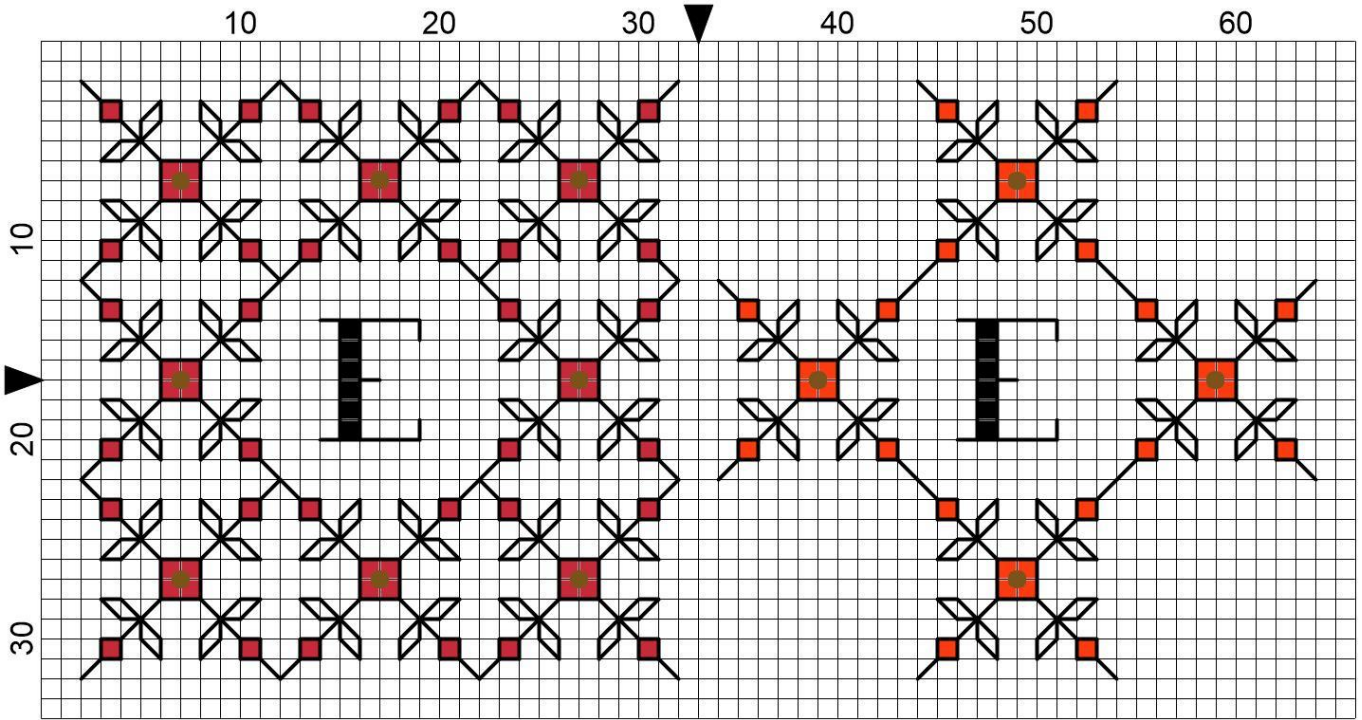
Pattern 130 Leaf and square variation

A leaf and block pattern used as a band pattern can also be used to 'frame' a motif by taking one motif and repeating it.

Threads: DMC 310, or DMC 310 and Anchor 1206

Stitches: back stitch, cross stitch, two strands





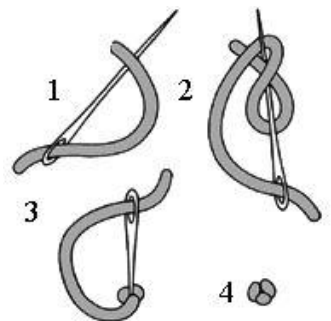
Look for mounts that are different from the norm to enhance the design.

Pattern 131 Miniature blackwork plants

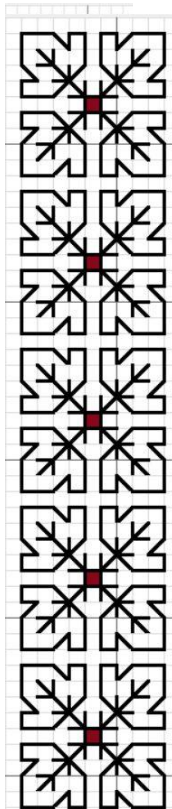
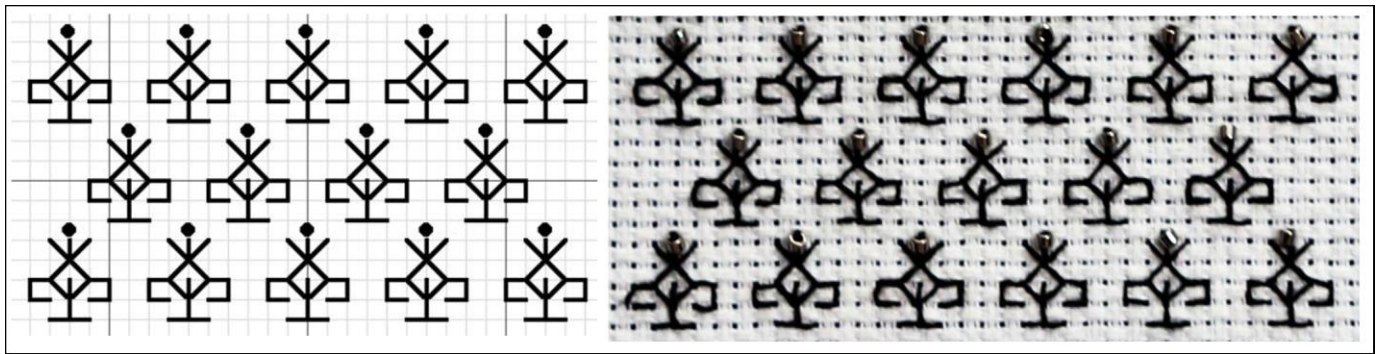
Tiny motifs such as the little plants can be used to fill spaces in a design and link the different elements together.

Technique; Blackwork
Thread: DMC 310

Stitches used: back stitch, Colonial knots or French knots



Colonial knot



Pattern 132 Broad leaf border

A block leaf design used as a band

Technique: Blackwork, cross stitch

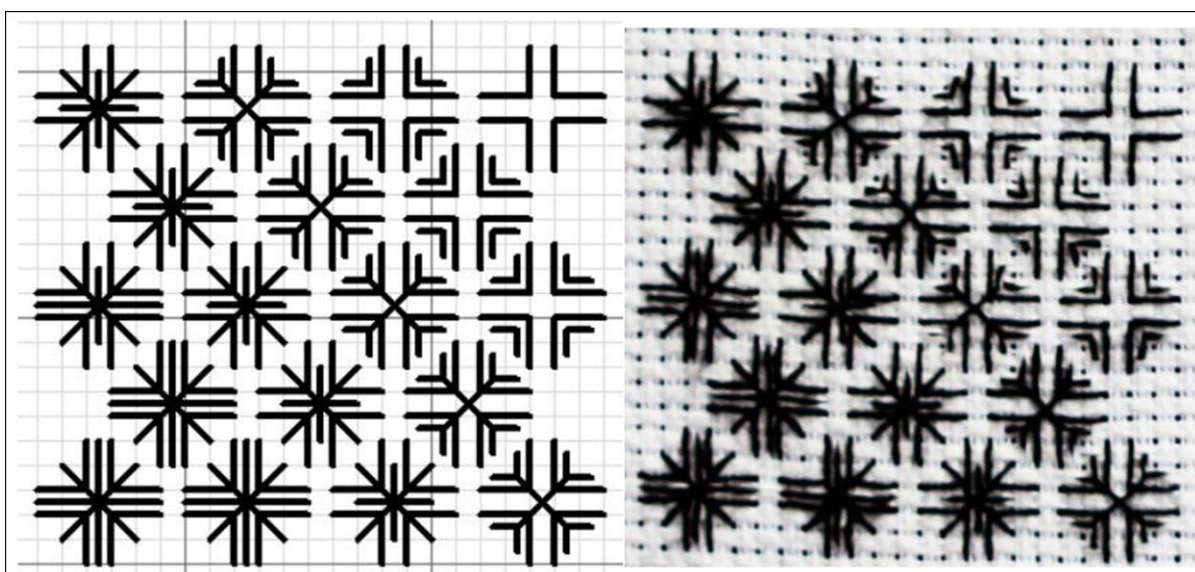
Threads: DMC 310

Note:

Border patterns on early samplers were only ever worked as straight sections, and never demonstrate how the embroiderer ought to take a corner. Such patterns were designed to be used as edgings and not as frames, and most were to be applied to personal linen such as shirts, chemises, collars, cuffs and caps.

Pattern 133 Pattern building

Blackwork patterns are built up by adding and removing stitches. This design shows how the shapes are constructed. The more stitches that are added the heavier the effect will be. The depth is not achieved by increasing the number of threads but by positioning the stitches closer together.

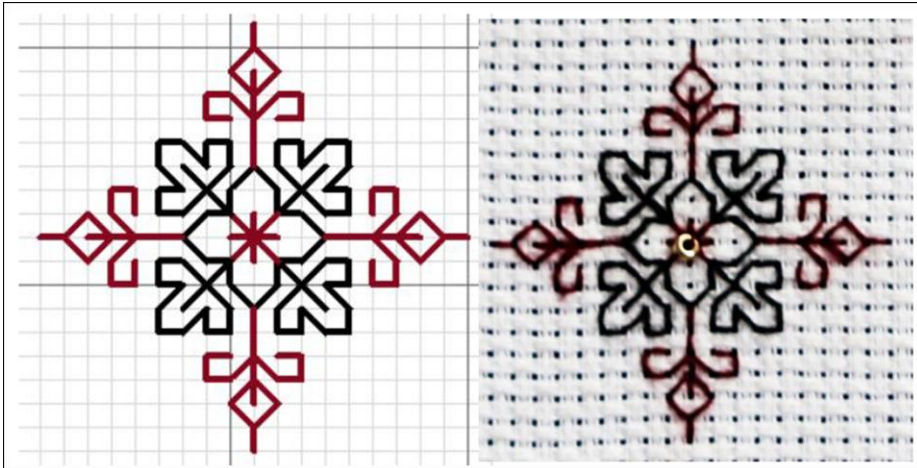


Working on Aida fabric when creating this type of pattern means splitting the blocks using a sharp needle and one strand of floss.

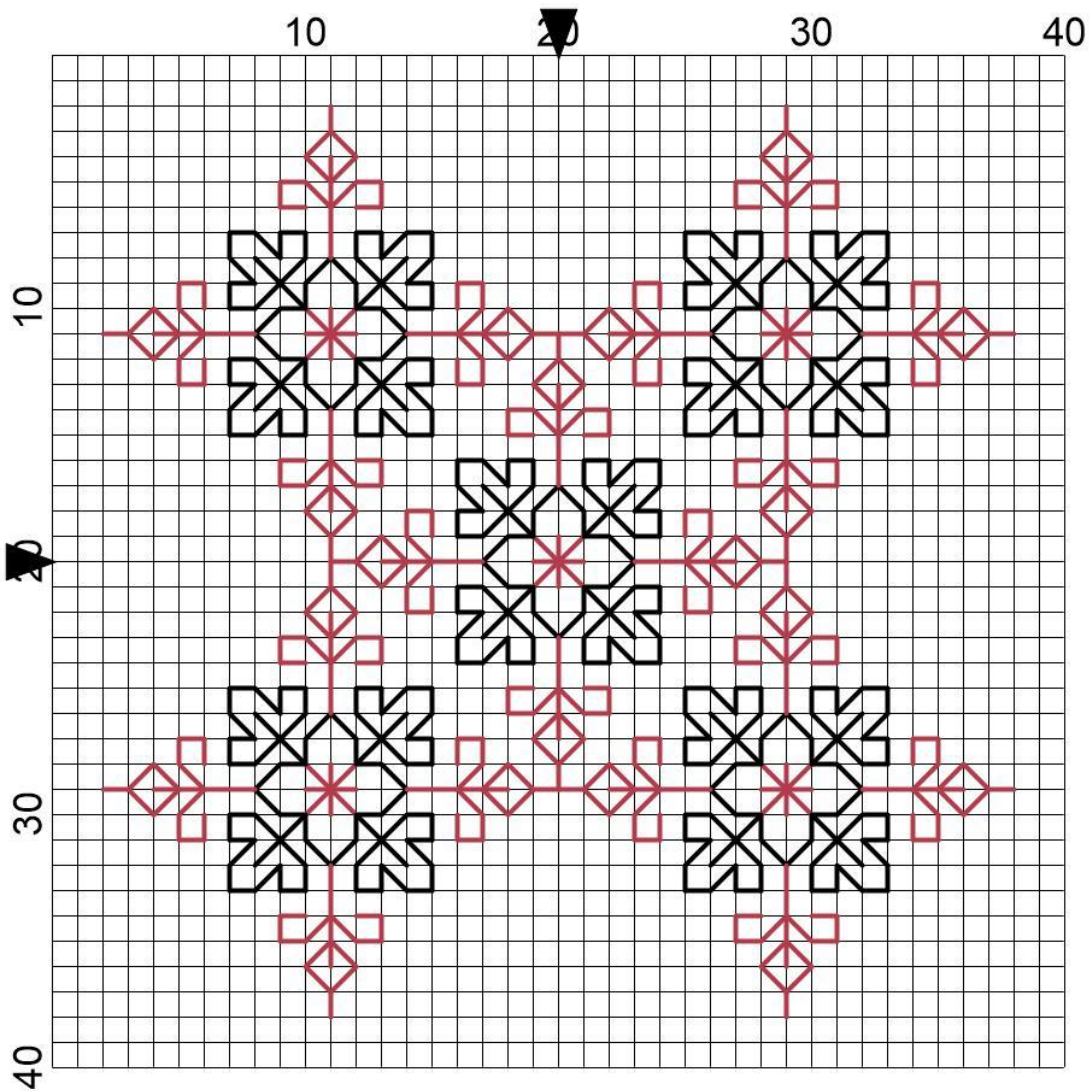
Pattern 134 Simple floral motifs

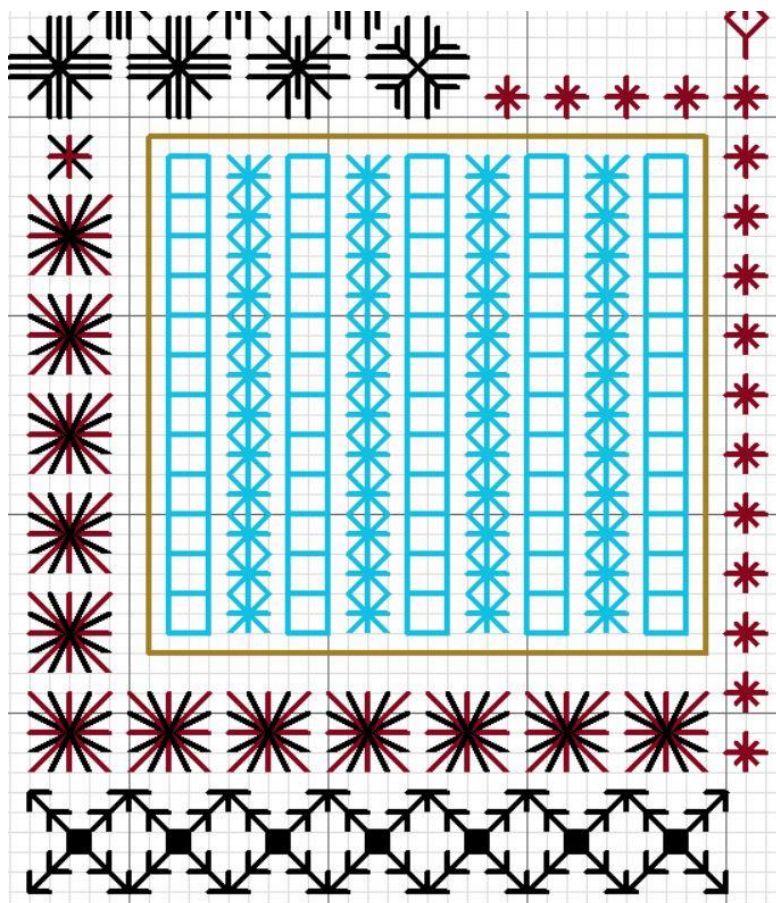
Technique: Blackwork

Threads: DMC 310, Anchor 1206



This is another example of a motif that can be joined and built into a larger pattern by joining four or more motifs together. Beads can be added to the eyelets in the centre for texture.





Patterns 135 - 138 Bands are used to surround a four-sided stitch and eyelet 'pulled' thread block (Pattern 136)

Pulled thread work stitches can be worked on Aida fabric if the stitches are pulled gently or treated as embroidery stitches.

Four-sided and eyelet block framed by Algerian eyelet, star stitch and back stitch

Pattern 135 16 arm Algerian eyelet over 4 blocks

Technique: Embroidery

Threads: DMC 310, Anchor 1206, one strand



Work the stitches from the outside into the centre

Pattern 136 Four-sided and Eyelet Block.

Threads: two strands of DMC 415

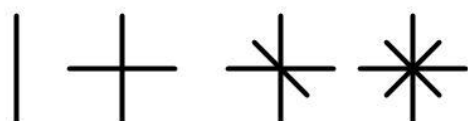
Method:

Start in the top left hand corner and work rows of four-sided stitch and eyelet stitch leaving ONE block between each column. Pull gently to open up the eyelets.

When the block has been completed work a row of back stitch in gold metallic round the square.(Pattern 137)

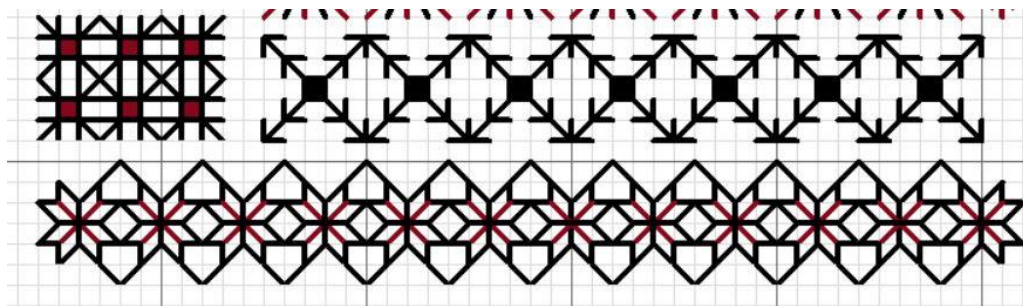
Pattern 138 Star Stitch

Technique: Blackwork Threads: DMC 310



Follow the stitch sequence.

Patterns 140 and 141 are blackwork bands used to add depth and weight to the corner. Cross stitch is worked in two strands of floss. The blackwork is worked in one strand of floss.



Add Patterns 139 Hungarian style cross stitch and Pattern 142 The 'Sublime Stitches' title, name and date and the first part of the owl scene in Part 11.

A complete alphabet will be included for you to personalise the design in Part 11

*Part of the gold back stitch has been omitted - does it look better with the back stitch or without?
Creating a design is all about making choices and even small ones can make a difference.*

This completes Part 10 of 'Sublime Stitches' Aida.

I hope you have enjoyed this month's contribution.

If you have any queries please contact:
lizalmond@blackworkjourney.co.uk

